

Instruction Manual



Spray Booth SK 66

TABLE OF CONTENTS

page

1.	Important safety instructions.....	3
1.1.	General information.....	3
1.2.	Safety instructions.....	3
1.3.	Safety instructions for operation.....	3
2.	Initial operation.....	4
2.1.	Delivery / removal of packing material.....	4
2.2.	Disposal of packing material.....	4
2.3.	Operation environment / place of operation.....	4
2.4.	Mounting of Spray booth.....	5
2.4.1.	Accessories the spray booth.....	5
2.4.2.	Mounting the Spray booth on its legs	5
2.4.3.	Drain plug.....	5
2.4.4.	Switching the suction motor on/off.....	6
3.	Maintenance / Care / Cleaning.....	7
3.1.	Preparation.....	7
3.2.	Exchanging the filter foam.....	8
4.	Circuit Diagram.....	10
5.	Guarantee regulations.....	11
6.	Industrial property rights / Trade names / Disclaimer.....	12
7.	Spare Parts.....	12
8.	Service contact details.....	12

1. IMPORTANT SAFETY INSTRUCTIONS

1.1. General information

Please make sure that you understand both the safety instructions and the safety icons, in order to eliminate potential danger. It is in your own interest to read through the following safety instructions very carefully before you start operating your kiln.

Always keep your instruction manual in a safe place. To your own safety use only ROHDE spare parts!

1.2. Safety instructions



Caution:
Hot surface, do not open
while kiln is hot!



Caution: high voltage -
danger!



Caution: Disconnect
power plug before
opening the switch box!



The CE icon confirms that
the conformity to EC
standards has been tested.

The ROHDE spray booth is an electrically operated device of **Safety Class I according to DIN VDE**, which should exclusively be used for painting ceramics, glass and porcelain with glaze.

1.3. Safety instructions for operation

The safe operation of a ROHDE Spray booth will only be possible by adhering to the following safety instructions:

- For your own safety you should wear a suitable breathing protection mask, as well as protective glasses in order to protect yourself against stone dust, etc. Ignoring these safety instructions can result in damage to persons and health. The manufacturer does not assume any liability for such cases!
- For industrial use a qualified electrician must check the spray booth in proper and perfect condition prior to first operation and in periods of 4 years (BGV A2 inspection).
- Repair and maintenance of electric components must be carried out by a qualified electrician.
- For safety reasons the power plug must be disconnected before carrying out maintenance or repair work.

2. INITIAL OPERATION

2.1. Delivery / removal of packing material

If the ROHDE Spray booth is delivered on pallet by freight forwarding, please check the delivery immediately for damages. Should you find any damages on the packing, unpack the pallet together with the driver and check the product for any damages. Write down any damages found on the delivery note and do not forget to have the note countersigned by the driver. Keep a copy of the damage complaint. Notify the forwarding agent immediately about the damage. We regret that later claims cannot be accepted.

2.2. Disposal of packing material

Please contribute to a clean environment by disposing of the wood, cardboard and plastic packing material in your nearest recycling centre. For further information on the disposal of packing material please contact your retailer or community council.

2.3. Operation environment / place of operation

When you choose a suitable place for your Spray booth, please take note of the following guidelines and prepare the Spray booth environment accordingly:

- Place the Spray booth on an even surface.
- The distance to the walls should be at least 25 cm on each side.
- Floor, insulations of the ceiling, walls, dividing walls, panelling, etc have to be made of material which is not easily flammable.
- Make sure that the environment of the Spray booth can be aired properly. If this is not the case a ventilation system has to be installed. Please consult a qualified ventilation specialist to find out if a ventilation system is necessary.

2.4. Mounting of Spray booth

2.4.1. Accessories of Spray booth

At first you should check the enclosed accessories (Picture 1) :

- 4 metal legs
- 8 wing nuts
- 8 spring rings
- 8 washers
- 8 carriage bolts
- 1 drain plug



Picture 1

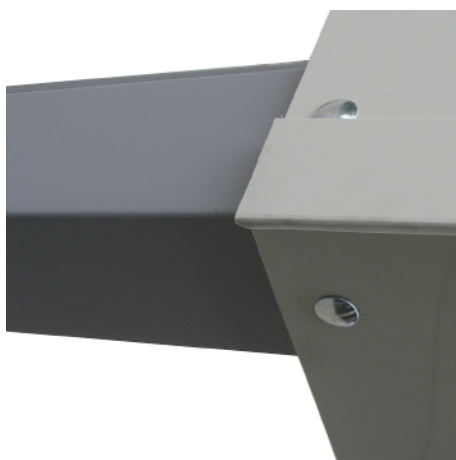
2.4.2. Mounting the Spray booth on its legs

Place the body of the spray booth flat on one side, in order to facilitate assembly. Make sure, that all drill holes for fixing the legs are accessible.

Place the legs on the spray booth body in a way, that the drill holes in the body and the legs are visible.

Now insert the carriage bolts (picture 2) into the drill holes and fasten each of them with a washer, a spring ring and the wing nut.

Attach the remaining legs in the same way.



Picture 2



Picture 3

With the help of another person lift the spray booth and place it onto its legs. Ensure that it is in a stable position. You might have to tighten the wing nut again.

2.4.3. Drain plug

Finally you have to install the drain plug in the provided drain hole (picture 4). For this purpose, please push the plug lightly into the hole (picture 5) and then press it in firmly.



Picture 4



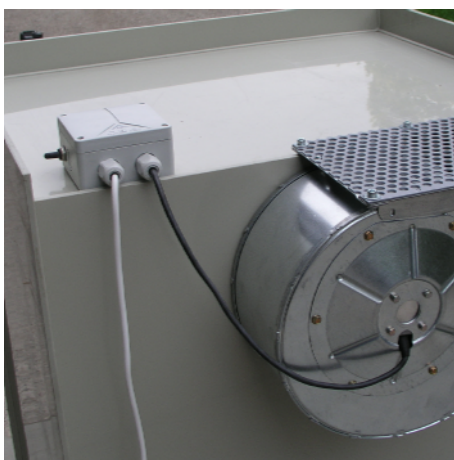
Picture 5

The purpose of the drain hole is to enable you to clean the spray booth; rinsing or cleaning liquid can drain out through it.

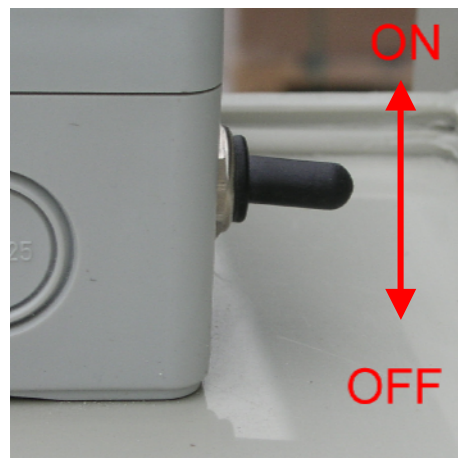
2.4.4. Switching the suction motor on/off

After you have assembled the spray booth and placed it in its final position, you can connect it to the power supply.

The on and off switch for the suction motor unit is located on the ceiling (picture 6) of the spray booth. By turning the switch to the position (picture 7) ON (switch up) or OFF (switch down) the suction motor can be switch on or off.



Picture 6



Picture 7

As an optional equipment we provide a connection reduction to \varnothing 150mm for onward piping.

CAUTION: Always disconnect the power plug from the mains before carrying out any assembly operations!

Remove the safety guard of the suction motor for the assembly operation. Then screw the connection reduction onto the suction motor.

3. MAINTENANCE / CLEANING

CAUTION: Always disconnect the power plug from the mains before carrying out any cleaning operations!

The spray booth naturally is exposed to contamination, which can be kept to a minimum by cleaning the spray booth regularly.

3.1. Preparation

In order to facilitate removing dried glazes, it is necessary to wet the spray booth with regular water.

You should therefore spray the booth with clean water several times. This should be done with water only, do not use any detergents!

Wipe the inside of the booth with a wet sponge. You might have to repeat this procedure.

The filter must be cleaned immediately after use.

If you open the drain hole (picture 8) during the cleaning process, you can drain the waste water into a water bucket.



Picture 8

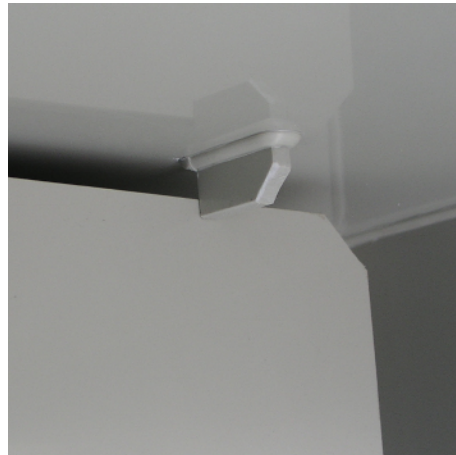
Do not forget to insert the drain plug again after the cleaning process!

3.2. Exchanging the filter foam

Lift the rear wall with both hands upwards out of the anchorage (picture 9) and then pull it away towards the front. The rear wall will be pulled out of the upper support automatically (picture 10).



Picture 9



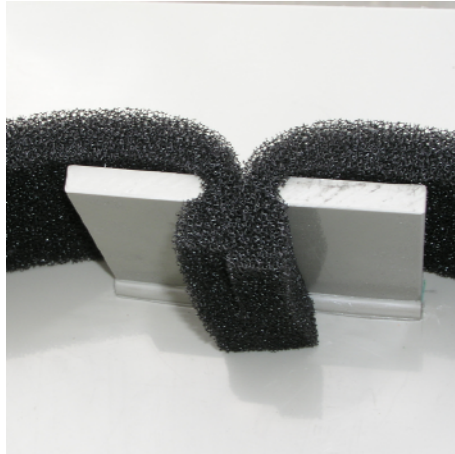
Picture 10

Place the rear wall flat in front of you (picture 11) and you can detach the filter foam easily.



Picture 11

Remove the dirty filter and replace it with a new, clean one. Clamp in the rims of the filter foam as demonstrated in picture 12. Further fixation is not necessary!



Picture 12

After you have exchanged the filters you can remount the rear wall to the spray booth. Lift the wall into the upper support and push it into the direction of the motor.

The lower anchorage locks automatically, you can now let go of the rear wall.

The diagram illustrates the electrical wiring for a spray booth (Spritzkabine). It features a three-phase power supply with lines labeled L1, L2, and L3. The motor (M) is connected to this supply through a switch (S2). A control circuit is also shown, which includes a switch (S1) and a fuse (F1). The control circuit is connected to the three-phase supply via a switch (S1) and a fuse (F1). The motor is connected to the three-phase supply via a switch (S2). The control circuit is connected to the three-phase supply via a switch (S1) and a fuse (F1).

5. GUARANTEE REGULATIONS

We guarantee the faultless workmanship and function of the delivered **Spray booth** and grant a 36-month guarantee.

In addition to the filter material (wearing parts) the following points are exempt from the guarantee:

- Damages which have been caused by the customer.
- Damage caused by the customer, e.g. unsuitable, aggressive detergents.
- Damage caused by inappropriate transport(s).
- Damage caused by inadequate applications for which the spray booth was not intended by the manufacturer.
- The manufacturer is not liable for any damage caused by inappropriate operation and resulting damages.

Important: Please fill in the GUARANTEE CARD and send it back immediately! Please note: If you do not send back the Guarantee Card, we will not be able to support you quickly and free of charge in an event of damage

What to do in the event of guarantee/damage:

Please notify your retailer - before any costs arise. Your retailer will then talk to us, the manufacturer, how to proceed.

In the case of a reclamation, please state the **Spray booth type, product number** and the **date of purchase** or the **year of construction** (see **type plate** on the Spray booth side).

		<small>HELMUT ROHDE GmbH Brännöfen und Maschinen ROSENHEIMER STR. 89 D - 83134 PRUTTING</small>	
Model	SK 66	Leistung Load	0,33 kW
Serial No.	17583	Stromaufnahme Supply	1,5 A
Spannung Electricity	1N/PEAC 230V	Baujahr Y.O.M	07/2005
	Maximaltemperatur Maximum operating temperature		---

6. INDUSTRIAL PROPERTY RIGHTS / TRADE NAMES / DISCLAIMER

The content of the instruction manual are purely informative. It may be changed without prior notice and may not be seen as a liability of Helmut Rohde GmbH. We do not guarantee or take over responsibility for the correctness or precision of the contents in this instruction manual.

We mention names, trade names, product identifications etc. without special identification, as they are commonly known. Those names and identifications, however, may be the property of companies or institutes.

7. SPARE PARTS

When ordering spare parts please have your invoice of purchase ready at any time.

8. SERVICE CONTACT DETAILS

Should you have any questions regarding your kiln, spare parts or additional equipment please contact your retailer.

We hope you will enjoy working with your new ROHDE Spray booth and
wish you much success at all times!
Your ROHDE-Team

**Helmut Rohde GmbH • Ried 9 • D-83134 Prutting
info@rohde-online.net • www.rohde-online.net**